

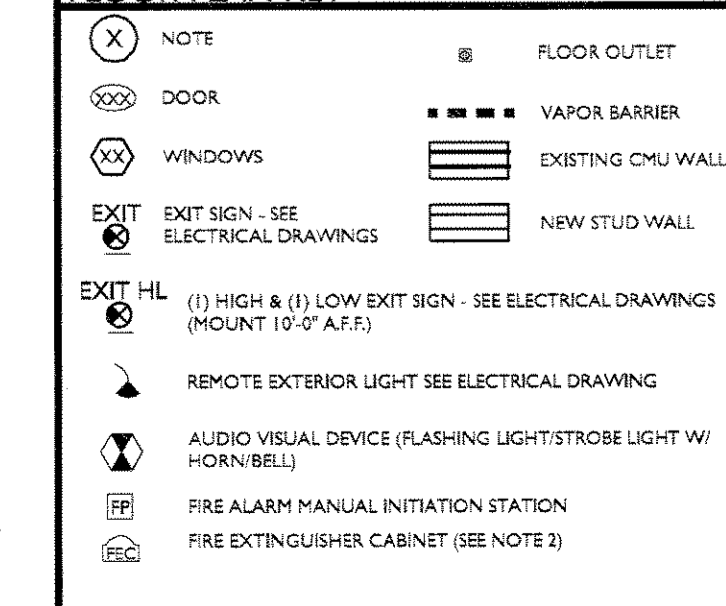
FLOOR PLAN GENERAL NOTES

- A. THE FOLLOWING OPENINGS IN THE BUILDING SHALL BE CAULKED OR OTHERWISE SEALED TO LIMIT INFILTRATION:
 - A. EXTERIOR JOINTS AROUND THE WINDOW AND DOOR FRAMES.
 - B. OPENINGS FOR ELECTRICAL AND PLUMBING.
 - C. ALL EXPANSION JOINTS AT ALL INTERIOR AND EXTERIOR CONCRETE AND CMU. SEE SPECIFICATIONS.
 - D. ALL OTHER PENETRATIONS OF THE BUILDING ENVELOPE.
- B. ALL DOORS TO BE OPENABLE FROM THE INSIDE WITHOUT THE USE OF A KEY, SPECIAL KNOWLEDGE OR EFFORT. ALTERNATIVELY AT DOOR AT MAIN ENTRY ONLY, PROVIDE A READILY VISIBLE AND DURABLE SIGN ADJACENT TO OR ON THE DOOR STATING THAT THIS DOOR SHALL REMAIN UNLOCKED WHENEVER THE BUILDING IS OCCUPIED WITH LETTERS ON CONTRASTING BACKGROUND AND MIN. 1" HIGH. SEE DOOR NOT'S ON DOOR SCHEDULE.
- C. PRIOR TO START OF FRAMING, GENERAL CONTRACTOR SHALL VERIFY ALL FRAMING REQUIREMENTS FOR MECHANICAL EQUIPMENT, MECHANICAL CHASIS, PLENUMS, CABINETS AND OTHER CONSTRUCTION ELEMENTS WITHIN THIS BUILDING NOT SPECIFICALLY DETAILED IN THE CONSTRUCTION DOCUMENTS AND INFORM ARCHITECT OF ANY DISCREPANCIES WITH THE CONTRACT DOCUMENTS PRIOR TO THE START OF ANY WORK. GO TO LOCATE CONTROL JOINTS IN GYPSUM WALL BOARD ASSEMBLY PER THE CONTRACT DOCUMENTS APPROVA.
- D. ALL DIMENSIONS ARE TO FACE OF FINISH, UNLESS OTHERWISE DIMENSIONED.
- E. FIRE RESISTIVE ASSEMBLIES FOR PROTECTION OF OPENINGS TO COMPLY WITH CHAPTER 6 IN NFPA 101.
- F. SPRINKLER SHOP DRAWINGS SHALL BE AVAILABLE ON THE JOB SITE AT ALL TIMES. AUTOMATIC SPRINKLER SYSTEM SHALL BE DESIGNED AND INSTALLED IN ACCORDANCE WITH NFPA-13. FIRE SPRINKLER HEADS AT SUSPENDED CEILING AND CANOPY AREAS TO BE RECESSED THROUGHOUT.
- G. ALL SIGNAGE SHALL BE IN ACCORDANCE WITH THE LOCAL CODE REQUIREMENTS.
- H. ALL FINISHES AND FINISH MATERIALS, COLORS OR TEXTURES SHALL BE VERIFIED BY ARCHITECT PRIOR TO INSTALLATION, FABRICATION OR ORDERING.
- I. ASSUMED FINISHED FLOOR ELEVATION - (SEE 51.0 ACTUAL FINISH FLOOR ELEVATION-VERIFY WITH CIVIL PLANS).
- J. SEE ROOM FINISH SCHEDULE IN THE INTERIOR DESIGN DRAWINGS FOR ALL ROOM FINISHES.
- K. TYPICALLY, UNLESS NOTED OTHERWISE, PARTITION WALLS SHALL BE CONSTRUCTED OF 5/8" GYP. BOARD - SEE STRUCTURAL DRAWINGS AND SPECIFICATIONS FOR GAUGE OF METAL STUDS.
- L. ALL VALVES AND CONTROLS SHALL HAVE SIGNS OR LABELS.
- M. ALL PIPING SHALL HAVE IDENTIFICATION AND DIRECTION OF FLOW.

PLAN KEY NOTES

- 1. FURNISHING (IN I.C.) FOR REFERENCE ONLY - (CONTRACTOR TO TRACE SHIPMENT, PLACE AND INSTALL)
- 2. PROVIDE FIRE EXTINGUISHER IN A SEPARATELY ENCLOSED CABINET AS REQUIRED BY LOCAL FIRE MARSHALL AND LOCATED WITHIN 75 FEET OF TRAVEL DISTANCE (NO LESS THAN ONE PER EVERY 1,000 S.F. OF FLOOR AREA) - TOTAL OF (16) REQUIRED FIRE EXTINGUISHER. PROVIDE STAINLESS STEEL CABINET IN WET LOCATIONS (POOL) AND PROVIDE HEAVY DUTY IMPACT RESISTANT CABINET DOOR AT GYMNASIUM - SEE SPECIFICATIONS. GENERAL CONTRACTOR SHALL REVIEW LOCATIONS OF FIRE EXTINGUISHERS WITH FIRE MARSHALL PRIOR TO INSTALLATION. ESTABLISH ALL LOCATIONS PRIOR TO COMPLETION OF FRAMING.
- 3. STAINLESS STEEL HAT CHANNEL WITH (10) TOWEL HOOKS AT POOL AND (6) AT SPA. PROVIDE BACKING AT STUD WALLS - SEE DETAIL 2107.0. SEE ID DRAWINGS FOR LOCATIONS.
- 5. FIRE DEPARTMENT LOCK BOX (MANUF: KNOX COMPANY - LOCATION TO BE VERIFIED)
- 6. NOT USED
- 7. NOT USED
- 8. POOL AND SPA CONSTRUCTION, DECKING, DRAINS, EQUIPMENT, AND ACCESSORIES - SEE POOL DRAWINGS.
- 9. MILLWORK - SEE INTERIOR DESIGN DRAWINGS.
- 10. ACCESS PANEL FOR FIRE INSPECTOR'S VALVE - SEE SPEX.
- 11. KICK BOXING BAGS - SEE STRUCTURAL DRAWINGS FOR SUPPORT SYSTEM.
- 12. BENCHES - SEE INTERIOR DRAWINGS.
- 13. GLASS BLOCK WINDOW - SEE DETAIL 11A.1
- 14. DATA OUTLETS, SEE ELECTRICAL DRAWINGS & ID'S
- 15. HANDICAP CHAIR LIFT - SEE POOL DRAWINGS
- 16. NOT USED
- 17. NEW ENTRY CANOPY
- 18. FLOOR OUTLETS, SEE ELECTRICAL DRAWINGS.
- 19. ELECTRIC WATER COOLER(S), SEE PLUMBING DWGS AND B1A.0.
- 20. NOT USED
- 21. FIRE BACKFLOW PREVENTER ABOVE. REFER TO FIRE PROTECTION DRAWINGS.
- 22. RECESSED ALUM. VINYL NON ROLL-UP ENTRANCE MAT W/ RIGID BACK NYLON CARPET INSET.
- 23. SWIMMING SUIT WATER EXTRACTOR
- 24. BASEBOARD HEATER
- 25. NOT USED
- 26. ROOF ACCESS HATCH (REF. A3.7) AND LADDER (REF. 21A.3.4)
- 27. NOT USED
- 28. FLOOR STRIPES
- 29. NOT USED
- 30. NOT USED
- 31. NOT USED
- 32. DOOR ALARMED FOR EXIT ONLY. ALL EXTERIOR DOORS TO BE LOCAL AUDIO ALARMED.
- 33. OPAQUE GLASS ASSEMBLY (REF. ID-4.1 FOR DETAILS)
- 34. NOT USED
- 35. WOODEN FLOOR TO BE CONSTRUCTED ABOVE DEPRESSED SLAB.

FLOOR PLAN KEY



LA FITNESS

LA FITNESS SPORTS CLUBS
YORK

381 LOUCKS ROAD
YORK, PA 17044
YORK COUNTY,
for
LA FITNESS INTERNATIONAL

ARCHITECT

WEBER AND COMPANY
ARCHITECTS

715 SOUTH THIRD STREET
PHILADELPHIA, PA 19147
P: 215.922.2499
F: 215.922.2598
E: aweber@weberandcompany.net

MEP ENGINEERS

THOMPSON ENGINEERING
MECHANICAL, ELECTRICAL, PLUMBING
ENGINEERS

3399 PEACHTREE ROAD, NE
SUITE 1210
ALANTA GA 30326
P: 404.266.1400
F: 404.364.0895
E: khenson@ctcieng.com

INTERIOR DESIGN

**SENNINGER WALKER
ARCHITECTS**
(INTERIOR DESIGN)

309 Pine Avenue, Suite 200
Long Beach, CA 90802
ph. 562.590.7999
fx. 562.590.7299
www.senningerwalker.com

POOL DESIGN ENGINEERS

**ATLANTIC AQUATIC
ENGINEERING, INC.**
(POOL DESIGN)

1823 DEEP RUN ROAD
PIPERSVILLE, PA 18947
P: 215-766-7541
E: bhanbicki@paddockatlantic.com

STRUCTURAL ENGINEERS

RING CONSULTING GROUP
STRUCTURAL ENGINEERS

512 W. Third Street
LANSDALE, PA 19446
P: 215.361.2301
F: 215.361.2305
E: dwg@ringconsulting.com

REVISIONS

03-14-06	DWG. SCALE ADJUSTMENT

PROJECT #	SCALE:
0603	AS NOTED

MAIN FLOOR PLAN

A

3.0

BID / PERMIT
24 FEBRUARY 2006