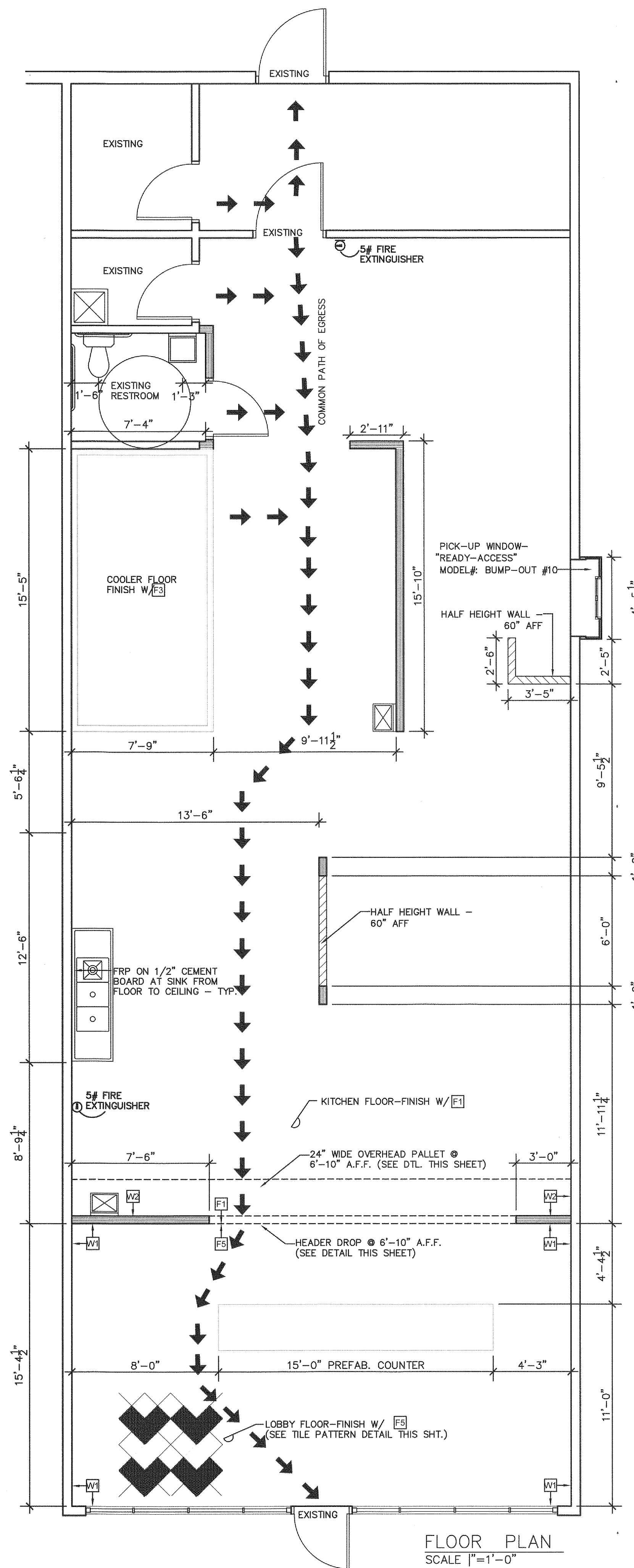
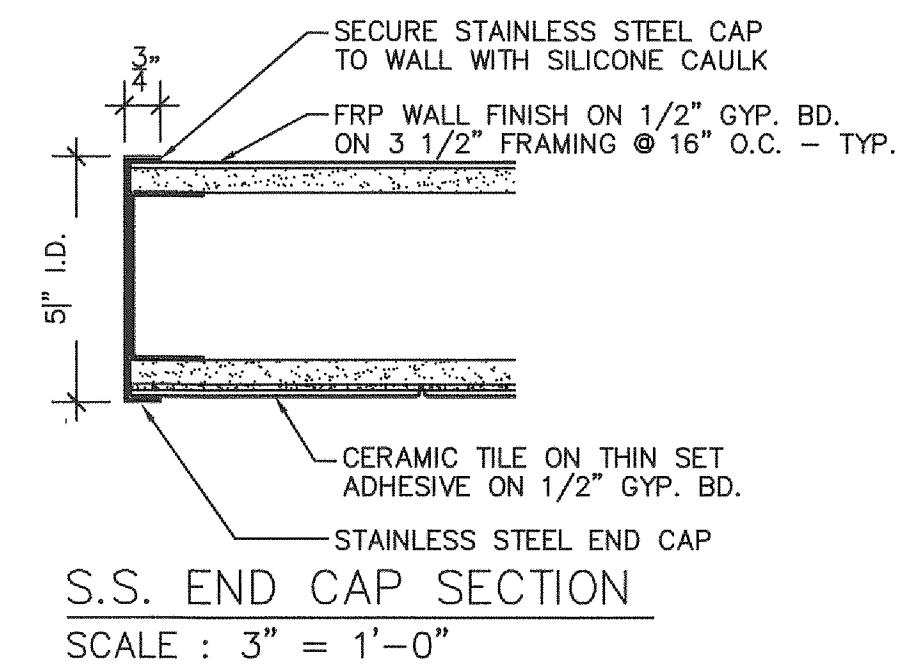


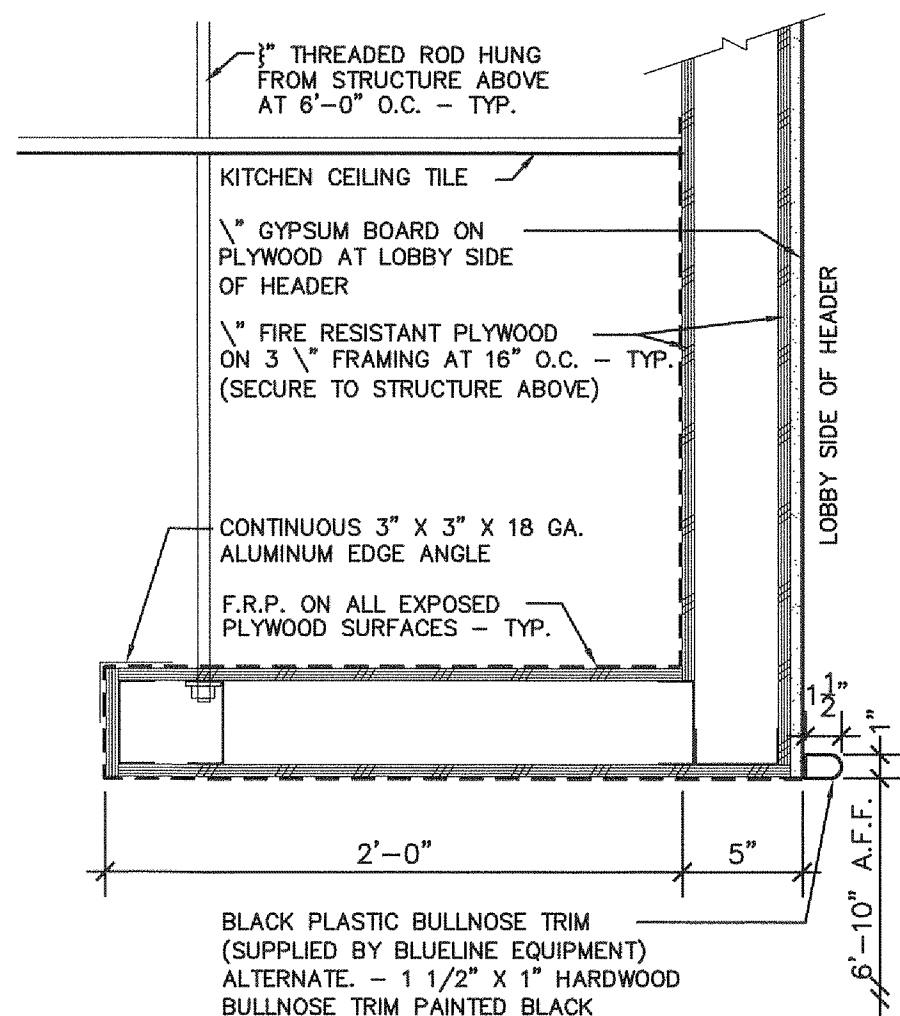
REFLECTED CEILING PLAN
SCALE: 1" = 1'-0"



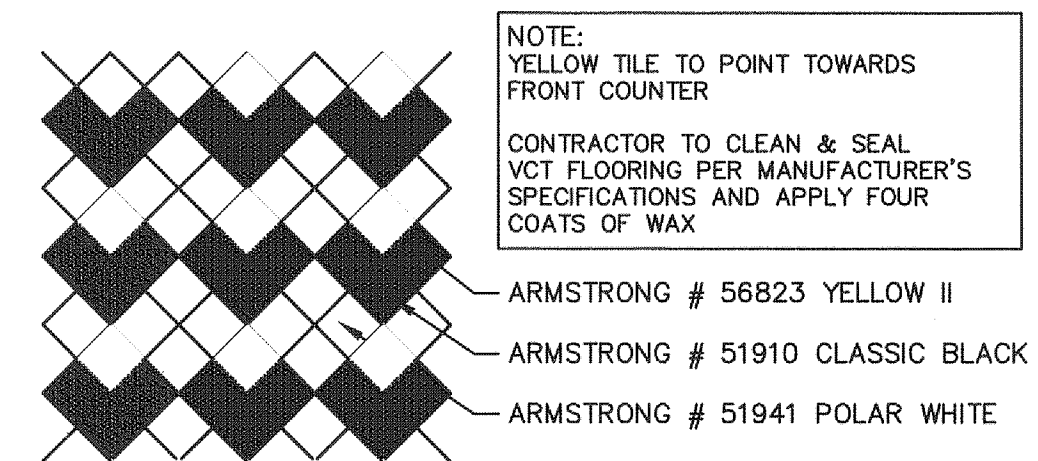
FLOOR PLAN
SCALE: 1" = 1'-0"



S.S. END CAP SECTION
SCALE: 3" = 1'-0"



1 MENU HEADER SECTION
SCALE: 1 1/2" = 1'-0"



LOBBY FLOOR TILE PATTERN
SCALE: 1" = 1'-0"

FINISH SCHEDULE

- FINISH NOTES:**
- ALL KITCHEN WALL FINISHES ARE TYPE W2 WITH A 4" VINYL COVE BASE UNLESS NOTED OTHERWISE.
 - ALL LOBBY WALL FINISHES ARE TYPE W3 TO 6'-10" A.F.F. WITH GYP. BD. PAINTED [P1] FROM 6'-10" A.F.F. TO CEILING UNLESS NOTED OTHERWISE. (SEE ELEVATIONS SHIT. 2)
 - ALL RESTROOM WALL FINISHES ARE TYPE W2 UNLESS NOTED OTHERWISE.

FLOORING

- F1** KITCHEN: VINYL COMPOSITE TILE 12"x12"x1/8" ARMSTRONG, STANDARD EXCELON IMPERIAL TEXTURE, 81941, POLAR WHITE. CONTACT: www.armstrongfloors.com 800-233-3823
ALTERNATE: AZROCK, CORTINA COLORS, V-682, CLOUD WHITE. CONTACT: www.azrock.com 800-366-2699
- F5** LOBBY: CREATE 24" x 24" CHECKERBOARD PATTERN ON 45° ANGLE WITH DALTILE, 12" x 12", COLOUR SCHEME, ARCTIC WHITE SPECKLED B926 & BLACK SPECKLED B927. 3/16" GROUT JOINTS, HYDROMENT, H144 MISTY GRAY. CONTACT: www.daltile.com 616-862-4748
ALTERNATE: CREATE 24" x 24" CHECKERBOARD PATTERN ON 45° ANGLE WITH STONEPEAK CERAMICS, INC., 12" x 12", NEW BASICS, #USM1212016 FROST MATTE & #USM1212020 QUARTZ MATTE. 3/16" GROUT JOINTS, HYDROMENT, H144 MISTY GRAY. CONTACT: www.stonepeakceramics.com 810-459-1009
ALTERNATE: www.bostik.com 800-726-7845

WALLS

- W4** 6" x 6" CERAMIC WALL TILE, OLYMPIA TILE / COLOUR AND DIMENSIONS BY TGT CERAMICS, WARM WHITE GLOSSY, GLOSSY BLACK GROUT WBOSTIK, HYDROMENT, H144 MISTY GRAY. CONTACT: www.olympiatile.com 800-687-8453
ALTERNATES: DALTILE, SEMI GLOSS, 0100 WHITE & K111 BLACK. GROUT W/MAPEI, 27 SILVER. CONTACT: www.daltile.com 616-862-4748
AMERICAN OLEAN, BRIGHT, 0090 WHITE & 0049 GLOSS BLACK. GROUT W/MAPEI, 27 SILVER. CONTACT: www.mapei.com 800-426-2734
WALL BASE: PROVIDE 4" x 6" SANITARY COVE BASE, FLORIDA TILE, BRIGHT, S-3419-S BLACK. GROUT WBOSTIK, HYDROMENT, H144 MISTY GRAY. CONTACT: www.flortile.com 800-352-8453
ALTERNATE: DALTILE, SANITARY COVE BASE, K111 BLACK. GROUT W/MAPEI, 27 SILVER. CONTACT: www.daltile.com 616-862-4748
ALTERNATE: MARLITE, PVC BASE MOLDING, P200 BLACK. CONTACT: www.marlitle.com 800-371-1221
- W2** FIBERGLASS REINFORCED POLYESTER PANEL (FRP), GLASBORD, 85 WHITE EMBOSSED, CLASS C. CONTACT: www.crane.composites.com 800-435-0080
- W3** FIBERGLASS REINFORCED POLYESTER PANEL (FRP), MATREX ST, 1130 COTTON WHITE. CONTACT: www.crane.composites.com 800-435-0080

CEILING

- C1** KITCHEN CEILING - 24" x 48" x 1/2" LAY-IN PANEL, UNITED STATES GYPSUM (USG), SHEETROCK, CLIMAPLUS, 3270 WHITE, VINYL FINISH. CONTACT: www.usg.com 800-950-3839
- C2** LOBBY CEILING - 24" x 24" x 5/8" LAY-IN PANEL, ARMSTRONG, DUNE 1774, WHITE. REGULAR EDGE DETAIL. CONTACT: www.armstrong.com/ceilings 877-276-7876
ALTERNATE: CERTAINTEED, CASHERS, CM-454 WHITE W/REVEAL EDGE. CONTACT: www.certainteed.com 800-233-9990
ALTERNATE: USG, ECLIPSE CLIMAPLUS, SLT EDGE, 76775 WHITE. CONTACT: www.usg.com 800-950-3839
- NOTE: PROVIDE MATCHING TEE GRID SYSTEM

PAINT

- P1** BENJAMIN MOORE, INTERIOR READY MIXED, I79 ATRIUM WHITE. CONTACT: www.benjaminmoore.com 800-344-0400
NOTE: USE BENJAMIN MOORE ECO SPEC EGGSHELL ENAMEL 223 FOR INTERIOR. USE BENJAMIN MOORE EGGSHELL FINISH HOUSE PAINT FOR EXTERIOR.

GENERAL NOTES

- ALL WORK SHALL CONFORM TO ALL FEDERAL, STATE AND MUNICIPAL CODES HAVING JURISDICTION OVER THIS PROJECT.
- CONTRACTOR SHALL VISIT THE SITE PRIOR TO CONTRACT TO VERIFY EXISTING FIELD CONDITIONS. ALL EXISTING DIMENSIONS SHALL BE VERIFIED AND/OR GENERAL CONTRACTOR SHALL BE RESPONSIBLE FOR SAME.
- ANY VARIATIONS OF THE DRAWINGS TO BE APPROVED BY LITTLE CAESARS ARCHITECTURAL DEPARTMENT (313) 983-6000.
- GENERAL CONTRACTOR TO RECEIVE, UNLOAD AND INSTALL ALL KITCHEN EQUIPMENT, FINISH MATERIALS AND ALL OTHER ITEMS DELIVERED TO STORE LOCATION.
- GENERAL CONTRACTOR TO PROVIDE A MINIMUM OF ONE FIRE EXTINGUISHER IN COMPLIANCE WITH THE LOCAL FIRE MARSHAL. LOCATION & QUANTITY OF FIRE EXTINGUISHER(S) TO BE DETERMINED BY THE FIRE MARSHAL.
- PROVIDE NON COMBUSTIBLE PLYWOOD BACKING IN LIEU OF GYPSUM BOARD AS BACKING FOR WALL MOUNTED WIRE SHELVES FROM 42" A.F.F. TO 60" A.F.F. SEE FLOOR/EQUIPMENT PLAN FOR SHELF LOCATIONS & WALL FINISH.
- OVEN TO BE SET IN PLACE PRIOR TO INSTALLATION OF COUNTERS.
- QUARRY TILE TO BE SEALED WITH SILICONE SEALANT.
- WALL PARTITION KEY:
TYP. INTERIOR PARTITION WALL, 1/2" GYPSUM BOARD EACH SIDE OF 1 1/2" x 3 1/2" 20 GA. METAL STUDS AT 16" O.C. WITH INDICATED FINISH.
EXISTING WALL
EXISTING WALL TO BE REMOVED (SHOWN DASHED)
HALF HEIGHT WALL [80" AFF]
- EQUIPMENT INDICATOR □ INTERIOR FINISH INDICATOR
- ▽ INDICATES PHONE LOCATION ON FLOOR/EQUIPMENT PLAN.

REVISIONS: ISSUE 'A' - 07/31/2018

FLOYD SCHEXNAYDER, ARCHITECT
421 W. Harwood Road
Hurst, Texas 76054
Phone: 817-285-7444
Fax: 817-285-7318

Little Caesar's
STORE # 1891-0008
15 SHIPPENSBURG SHOPPING CENTER
SHIPPENSBURG TOWNSHIP, PENNSYLVANIA

FLOOR PLAN
REFLECTED CEILING PLAN

JOB #
13-023
SHEET NUMBER
A1